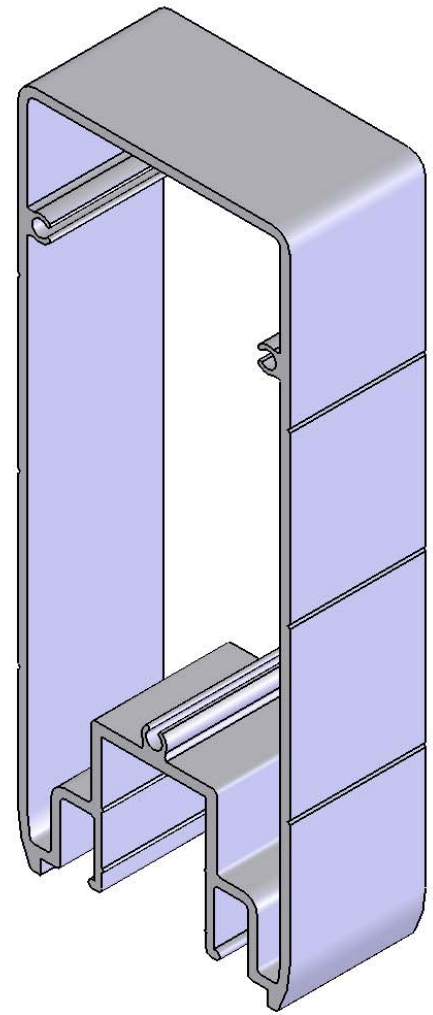


**FRONT VIEW PROFILE  
SCALE 1:1"**



**ISOMERIC VIEW**

 <b>RAILCRAFT</b> ALUMINUM RAILING SYSTEMS  <b>RAILCRAFT INTERNATIONAL Inc.</b> 13272 Comber Way Surrey, B.C. Canada, V3W 5V9	UNLESS OTHERWISE SPECIFIED: DIMENSIONS ARE IN INCHES TOLERANCES: FRACTIONAL ± ANGULAR: MACH ± BEND ± TWO PLACE DECIMAL ± THREE PLACE DECIMAL ± INTERPRET GEOMETRIC TOLERANCING PER:	DRAWN CHECKED ENG APPR. MFG APPR. Q.A.	NAME JGUIANG KEN BOYCE	DATE 03MAR05 03MAR05	DATE DRAWN: 03 MARCH 2005
	MATERIAL ALLOY & TEMPER: 6063-T5 FINISH MILL FINISH SOLIDWORKS 2008	<b>PROPRIETARY AND CONFIDENTIAL</b> THE INFORMATION CONTAINED IN THIS DRAWING IS THE SOLE PROPERTY OF RAILCRAFT INTERNATIONAL INC. ANY REPRODUCTION IN PART OR AS A WHOLE WITHOUT THE WRITTEN PERMISSION OF RAILCRAFT INTERNATIONAL INC. IS PROHIBITED.			DWG. NO. <b>5000S TOP RAIL</b>
		SIZE <b>A</b>	DWG. NO. <b>39-588</b>	REV. <b>0</b>	SHEET 1 OF 1
	SCALE: 1:1	WEIGHT:			