

Interpon D : Architectural Powder Coatings





Interpon D

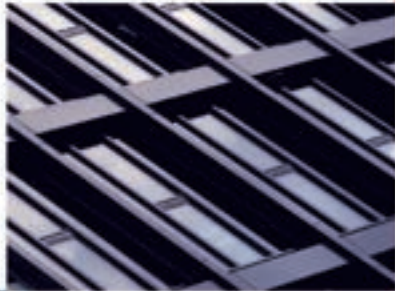
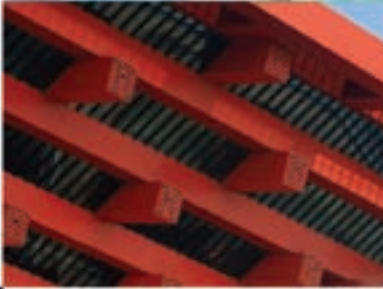
World's Largest Coatings Company

AkzoNobel is a multinational company that serves customers around the world with coatings and chemicals and enjoys a leading global position in powder coatings. With more than 30 factories on 5 continents, AkzoNobel Powder Coatings' worldwide organization allows architects and fabricators to specify AkzoNobel Powder Coatings wherever the building may be. Our global team of architectural specialists allows us to manage projects at an international level, and our local teams market our products and support our customers in over 40 countries.

Experience and Expertise

We were the first company to introduce powder coatings to the architectural industry nearly forty years ago, and our expertise in this sector has propelled AkzoNobel Powder Coatings to the number one position in the industry.

Whether you're thinking residential high-rise, city center office tower, coastal location or sunbaked plateau, the products from the **Interpon D** range can provide coating solutions for all performance demands and environments.



Interpon D Range

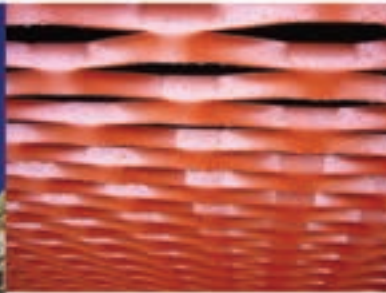
In the Architectural market, our global product range goes under the brand **Interpon D**.

Interpon D powders are available in an extensive range of colors (including custom color match) and appearances which span standard durable to hyper-durable. **Interpon D1000/D1010, D2000** and **D3000** series provide respectively 1-year, 5-year, and 10-year durability in industry standard "Florida" weathering tests and meet all the major architectural quality standards (including AAMA, Qualicoat and GSB depending on the region in which the product is applied).

Our products come with a range of guarantees and provide a professional coating solution for any requirement or environment. Durability and color, that's what our architectural products offer, and we are extremely proud of our range of **Interpon D** Architectural products, which help protect and decorate structures the world over.






Architectural Powder Coatings



Interpon D color offering

The superior technical performance of **Interpon D** is available in an extensive range of standard and customized shades, gloss levels, special finishes and metallic effects to provide the widest scope for design.

For information on our custom color match service, please contact an AkzoNobel Powder Coatings professional.

Product Ranges	Hyper Durability	Ultra Durability	Standard Durability	
	Interpon D3000*	Interpon D2000*	Interpon D1010*	Interpon D1000
Warranty*	Platinum 	Gold 	Silver 	N/A
Performance Guarantee	30 Year Film Integrity Warranty 20 Year Decorative Integrity Warranty	20 Year Film Integrity Warranty 15 Year Decorative Integrity Warranty	10 Year Decorative and Film Integrity Warranty	
Specifications	10 years Florida AAMA 2605	3 and 5 years Florida AAMA 2604	1 year Florida AAMA 2603	1 year Florida AAMA 2603
Available Finishes	Satin Texture	Gloss Satin Matt Texture	Gloss Satin Matt Texture	Gloss Satin Matt Texture

***D1010, D2000** and **D3000** products are supplied only to **Interpon D** Approved Applicators. We undertake an extensive evaluation process and only issue Approved Applicator status to companies whose standard of coating, testing and quality management systems meet the demands of the architectural industry and have demonstrated their commitment to the highest standard of quality.



Metallic Finishes



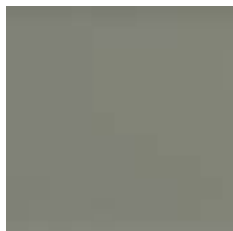
Platinum Ice YW202Q
Fluoromax Quartz 8W209Q



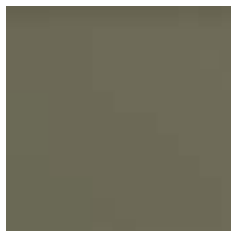
Venus YW213Q
Fluoromax Aluminum 8W211Q



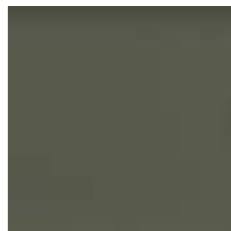
Anodic Ice YW212Q
Fluoromax Silver 8W210Q



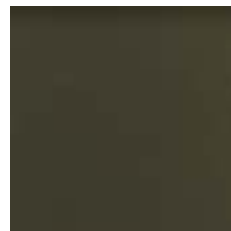
Silver YW2797



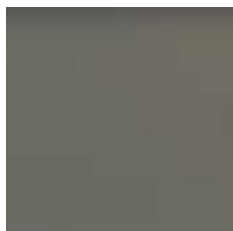
Gris 2150 Sable YW3097



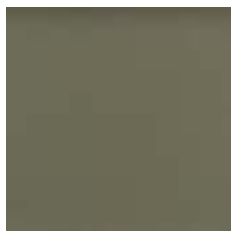
Noir 2400 Sable YW3117



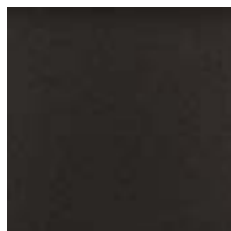
Platine YW2807



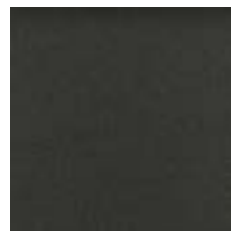
Champagne YW2827



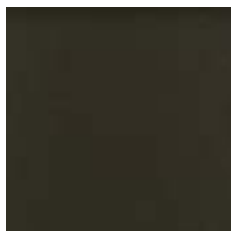
Saturn YW203Q
Fluoromax Steel 8W212Q



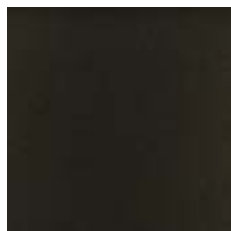
Noir 2200 Sable YW3087



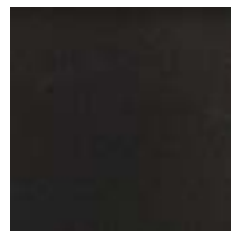
Bleu 2600 Sable YW3127



Brun 2650 Sable YW3147



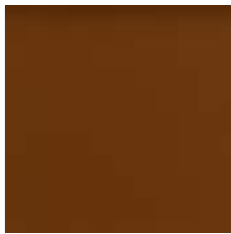
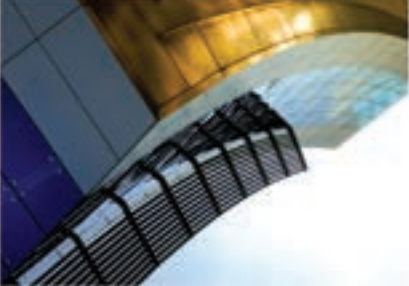
Manganese YW2637



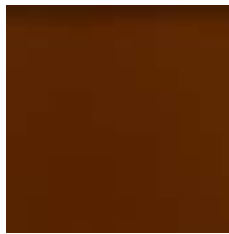
Mangalia YW2667



Colors indicative only.
Actual product may vary slightly.



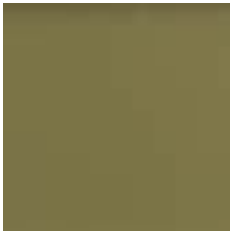
Azurite Copper YW210Q
Fluoromax Copper 8W201Q



Bronze YW209Q
Fluoromax Bronze 8W202Q



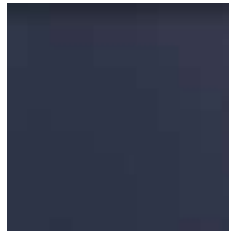
Burgundy Mist YW211Q
Fluoromax Burgundy 8W200Q



Patina YW207Q
Fluoromax Patina 8W208Q



Golden Beach YW2437



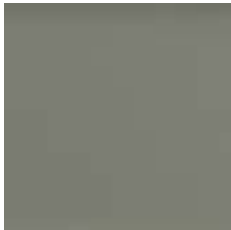
Sapphire Ice YW205Q
Fluoromax Azure 8W204Q



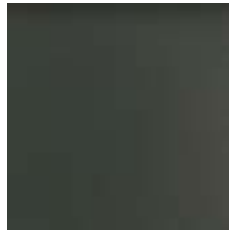
Ghardaia YW2817



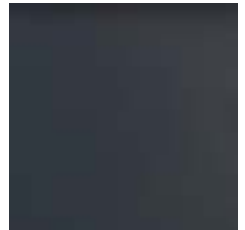
Gris 29770 Chine YX0027



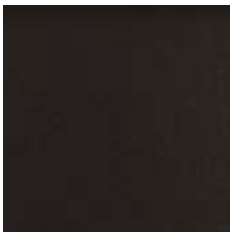
Seafoam Mist YW206Q
Fluoromax Surf 8W207Q



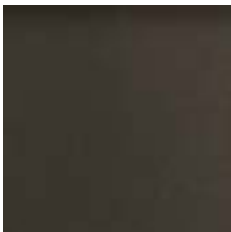
Hartford Mist YW208Q
Fluoromax Moss 8W206Q



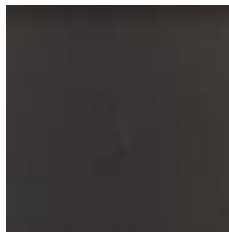
Panther YW2397
Fluoromax Panther 8W205Q



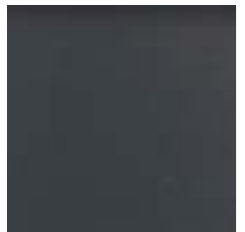
Noir 2100 Sable YW3077



Moon Stone YW204Q
Fluoromax Carbon 8W214Q



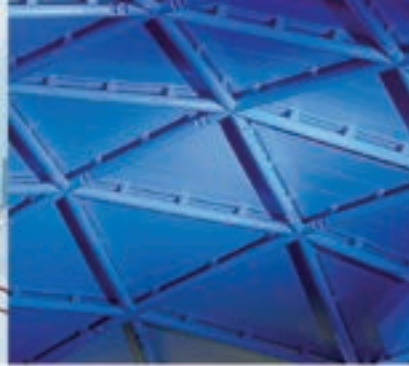
Slate YW2407
Fluoromax Slate 8W213Q



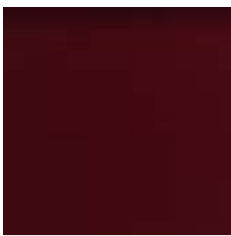
Vega YW2387
Fluoromax Vega 8W203Q



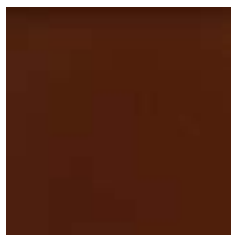
For more information or to request a sample panel speak to your local representative or visit www.interpon.us



Solid Colors



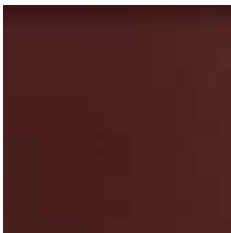
Claret Red YG203U



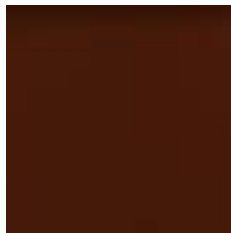
Redwood YG202U / 8G200Q



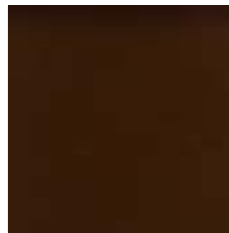
Brick Red YG201U / 8G202Q



Boysenberry
YG204U / 8G203Q



Java Brown
YM203U / 8M200Q



Sepia Brown
YM204U / 8M201Q



Medium Bronze
YM202U / 8M202Q



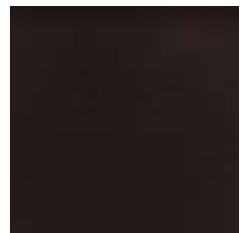
Medium Blue
YJ202U / 8J201Q



Midnight Blue
YJ200U / 8J203Q



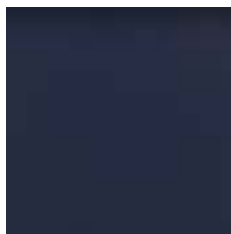
Black YN200U / 8N200Q



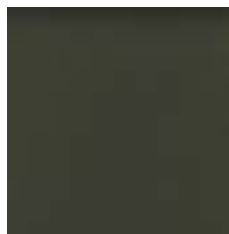
Atlantic Gray
YL207U / 8L205Q



Military Blue YJ201U / 8J200Q



Deep Blue YJ203U / 8J202Q



Charcoal YL200U / 8L203Q



Dove Gray YL201U / 8L201Q



For more information on
sample panel speak to
or visit www.interpon.com



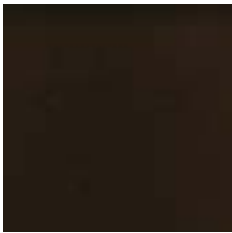
Light Green
YK201U / 8K204Q



Dark Ivy YK204U / 8K203Q



Interstate Green
YK202U / 8K202Q



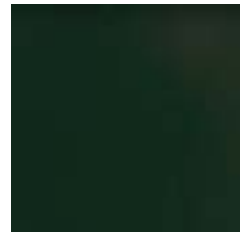
Classic Bronze
YM201U / 8M203Q



Antique Bronze
YD203U / 8D203Q



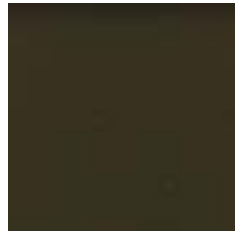
Hartford Green
YK200U / 8K200Q



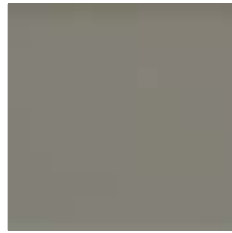
Dark Green
YK203U / 8K201Q



Night Hawk Gray
YL202U / 8L202Q



Smoke Gray
YL204U / 8L204Q



Seawolf YD204U / 8D202Q



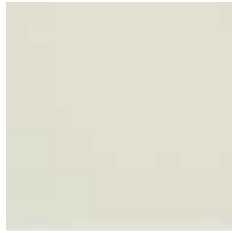
Sandstone
YD201U / 8D201Q



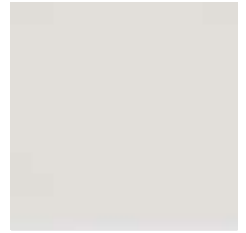
Light Gray YL206U / 8L200Q



Ivory YD200U / 8D200Q

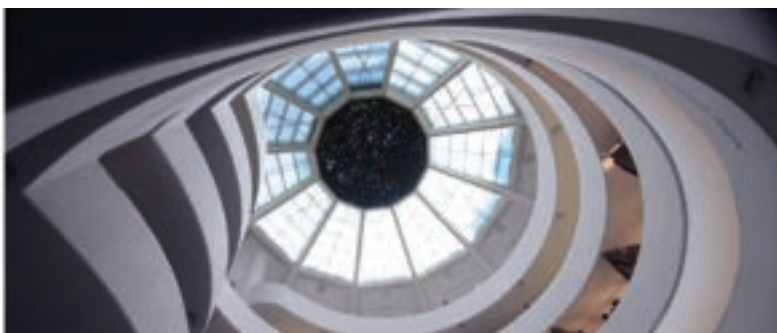


Milk White YA201U / 8A200Q



Bone White YA200U / 8A201Q

to request a
your local representative
US





Follow AkzoNobel Powder Coatings on Facebook

For more information please contact your local representative or visit www.interpon.us

AkzoNobel Powder Coatings
150 Columbia Street
Reading, PA19601

Tel: 855-867-2990
Tel: 610-685-7600



Environmental Product Declaration
An EPD® is a certified Eco-footprint;
our commitment to sustainability.

Download our apps



AkzoNobel Design app has been created especially for use by architects, specifiers and designers.



Our Interpon App opens the door to all you need to know about Interpon powder coatings.

Interpon®

All products supplied & technical advice given are subject to the standard terms of sale of the AkzoNobel supplying company.
Copyright (c) 2019 Akzo Nobel Powder Coatings Ltd.
Interpon is a registered trademark of AkzoNobel.
(Issue 1.2 - 04/2019). Printed in the USA.